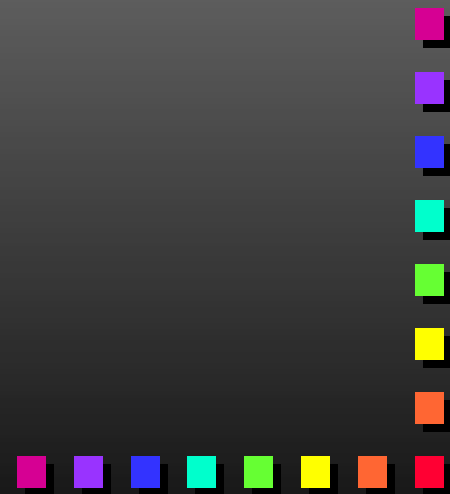


*EVANGELISTIC
BLOCK PARTY
Training, Level 2*



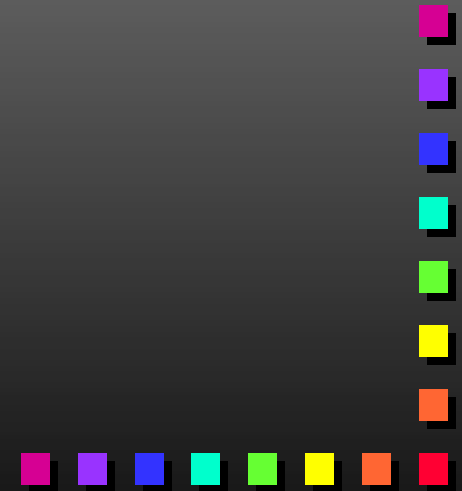
The Evangelistic Block Party...

... is an intentional evangelistic tool



A-G Strategy Review

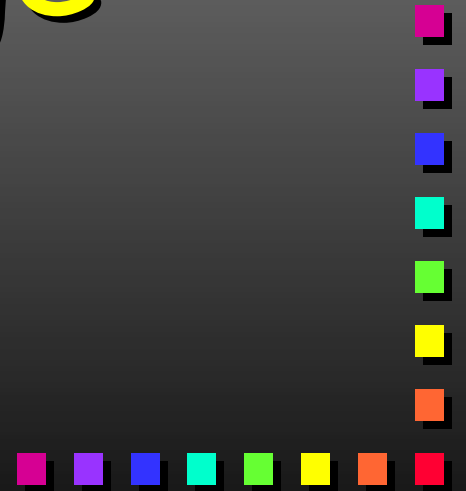
- A - Attract Attention
- B - Build a Bridge
- C - Communicate Christ
- D - Determine a Decision
- E - Evaluate the event
- F - Faithfully Follow-up
- G - Glorify God



THEMES HELP . . .

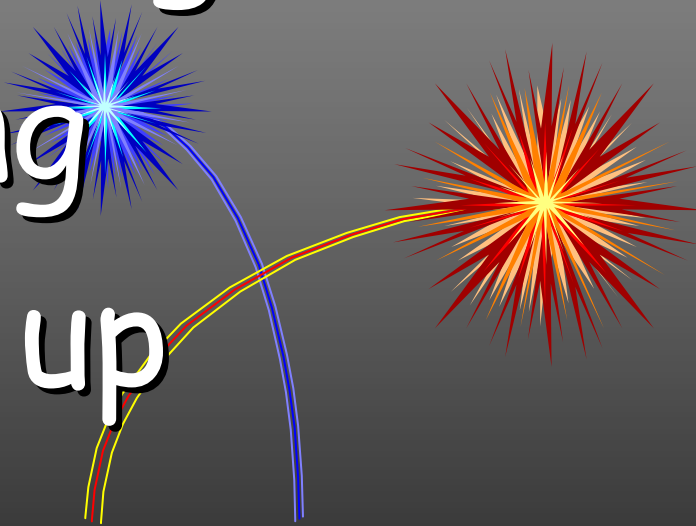
A - Attract Attention

B - Build a Bridge



Themes

- Promoting
- Planning
- Follow up



Themes

- Kites & Kids
- Flying High
- Hawaiian Luau
- Beach Party



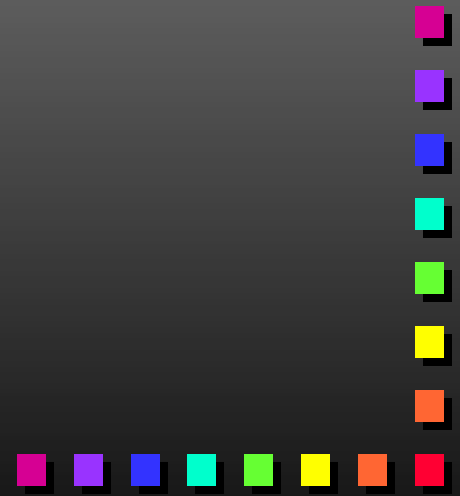
Themes

- Mexican Fiesta (*or other ethnic group emphasis*)
- Shoot the Hoops Party
- Art in the Park



Themes

- Educational
- Safety
- Bikes & Blades
- Back-to-School



Themes

■ Holidays

■ Easter

■ Memorial / Labor Days

■ Flag Day



Themes

- Popular Themes
 - "Survivor" Show
 - "Millionaire" Show
 - Honoring Heroes / Patriotic

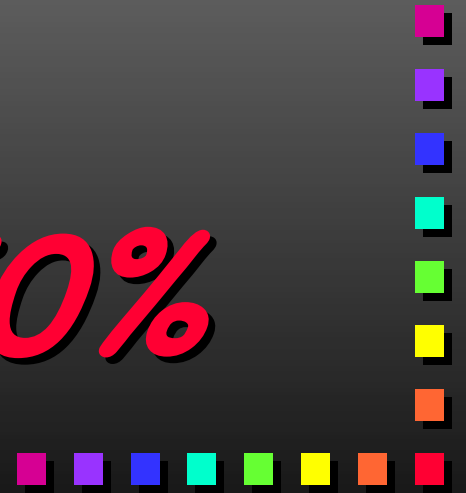


Timeline

Preparation is 30%

*The Block Party is
20%*

Follow-Up is 50%



F - Faithfully Follow-up

1. PREPARATION

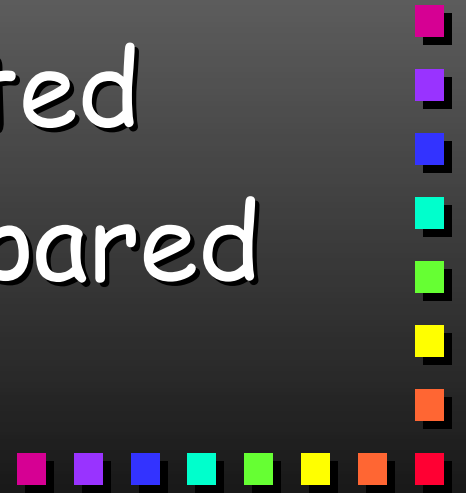
2. IMPLEMENTATION

3. EVALUATION



1. Preparation

- Physical Preparation
 - Gifts for Delivery
 - F/U Packets Prepared
 - Evaluation Cards Printed
 - Other Literature Prepared and Assembled



1. Preparation

■ Enlistment

■ Follow-Up Records Team
(Review STATS Form)

■ Follow-Up Visitation Team



2. Implementation

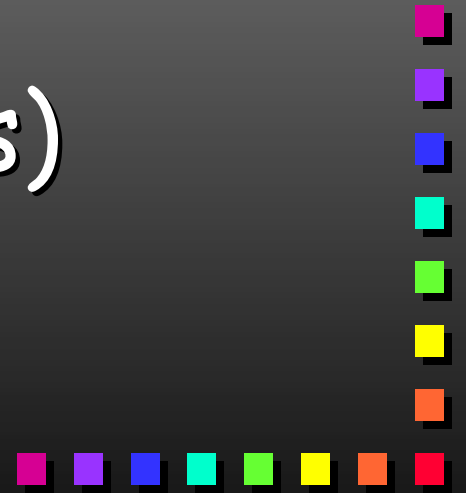
- Principles for Effective F/U
 - Responsiveness of Recipient
 - Genuineness of the Visitor
 - Completeness of Process



2. Implementation

■ UNDERSTAND PROCESS

- Entry Point
- Initial F/U Contact
- Cultivative Contacts
- Evangelistic Contact(s)
- Conversion
- Assimilation



2. Implementation

- Day of Party

"First Steps"
Book



2. Implementation

- Day of Party

- *First Steps Book*

1. Decision is made
2. To Designated Person
3. Affirm Decision
4. Give "*FS*" Book (Church Labels)
5. Fill Out Decision Card



2. Implementation

- Follow Up Through

7-in-7
Outreach
Process



7-in-7 Outreach

Simple Strategy:

Make

7 Contacts in
7 Weeks

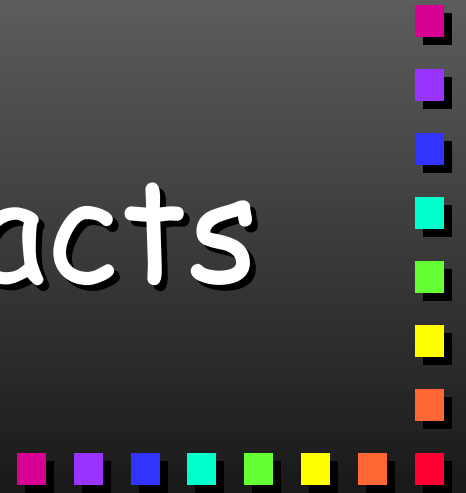


Following Entry Point Contact



7-in-7 Outreach

- A Minimum of ...
 - 2 Visits
 - 2 Phone Calls
 - 3 Written Contacts



7-in-7 Outreach

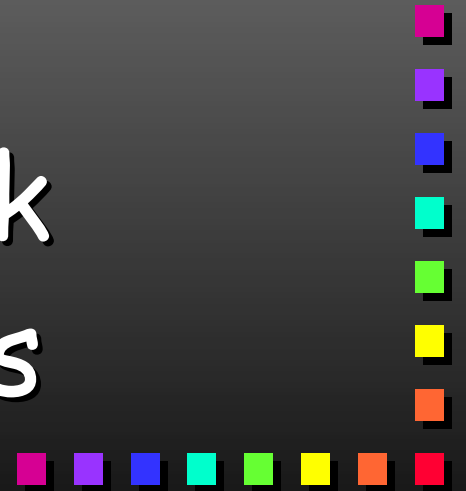
■ Initial Visit

■ Within 72 Hours
(normally)

■ EBP's

■ Decisions - 1 Week

■ Others 2-3 Weeks



7-in-7 Outreach

- Popcorn Visits
- Gift Delivery
- Use EBP Evaluation Cards



Role Play *FOLLOW-UP*



2. Implementation

- Phone Calls

- Script is helpful

- Brief and "To the Point"



2. Implementation

- Correspondence

- Personal & *Handwritten*

*(not church letterhead,
envelope, etc.)*

- Personal

("Glad to have met you at our...")



2. Implementation

■ Correspondence

■ If Large # ...

...Form Postcard might be used for **Immediate**
First Written Contact



3. Evaluation

- Keep Good Records - It's Kingdom Work
- How Many Households?
- How Many Potential Persons?
- How Many Decisions?



QUESTIONS

